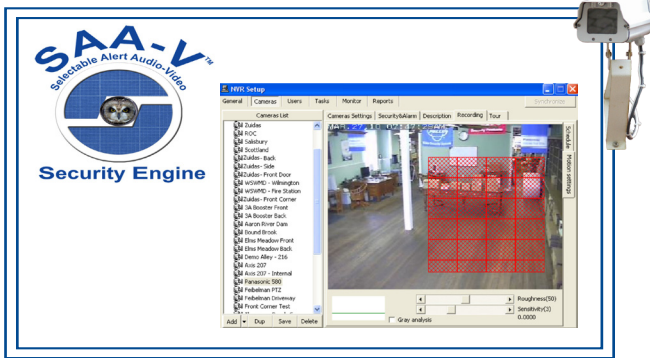


**New**

# SAA-V SECURITY SYSTEM

## WIRELESS SELECTABLE ALERT A-V SURVEILLANCE SYSTEM

**WIRELESS SELECTABLE ALERT A-V SECURITY SYSTEM**



DATA-LINC's SAA-V Security Engine system includes a built-in PC "task engine" with loaded feature-rich software. The system is the ultimate in security/surveillance, standing alone, unique in its field in the number of features and benefits it offers including support for up to five cameras per server. The task engine PC provides total facility integration to provide site security from process to perimeter via wired or wireless Ethernet. The system not only detects security intrusion in broad to specific, user-defined areas, but has enough sophistication to act on defined threats with user-programmable responses.

The DATA-LINC SAA-V software is an IP based Network Video Recorder (NVR) that is ideal for controlling and recording up to five cameras per server. The NVR supports automatic video storage triggered from software motion sensing and/or hard inputs from the camera (motion detectors, light beams, door contacts, etc.). Touring capabilities are included, as well as several multimedia functions that are useful when remote notification is desired.



**Corporate Headquarters**  
3535 Factoria Blvd. SE, Suite 100  
Bellevue, WA 98006 USA  
info@data-linc.com

Tel: (425) 882-2206  
Fax: (425) 867-0865  
www.data-linc.com

### FEATURES

- **Compatible with industry standard networks, servers, databases and storage systems**
- **Remote access via the Data-Linc Remote Client software**
- **SCADA OPC Connectivity**
- **Direct client-to-camera communication— no traffic bottle-necks at server**
- **Full duplex, real-time audio support**
- **Internal encryption protocol for data security**
- **Built-in protection from undetected fraudulent image alteration**
- **Limitless control via external program execution**
- **Multiple scheduled recording modes— continuous, on alarm and/or on event detection**
- **Selectable notification— on-screen, voice, and email**
- **Adjustable recording control**
- **I/O device video motion detection support**
- **Internal port mapping capabilities for network separation— no router required**
- **Ultimate in scalability with flexible licensing model**

### ALLIANCE PARTNERSHIPS



Collaborative Automation by



**Operating Frequency**

**License-free, 2.4 GHz ISM band**

**FCC:** 2.412-2.462 GHz (CH 1-CH 11)  
**TELEC:** 2.412-2.472 GHz (CH 1-CH 13)  
**ETSI:** 2.412-2.472 GHz (CH 1-CH 13)

**Included.**

**CD** User Manual  
**Antenna.** Test Antenna  
**Other.** Ethernet Cable, Power Supply, Quick Start Guide

**Transmitter**

**Distance.** Up to 6 miles (9.6 km) LOS with Yagi antennas  
**RF Output Power.** 200 mW (23 dBm)  
 EU version < 100 mW  
**Modulation.** CCK, OFDM  
**Spreading Code.** Direct Sequence  
**Channel.** 11 (USA) 14 (other countries)  
**Occupied bandwidth.** 5 MHz, 10 MHz or 20 MHz

**Receiver Sensitivity**

-74 dBm @ 54Mbps Rx Sensitivity (802.11g)  
 -94 dBm @ 6 Mbps Rx Sensitivity (802.11g)  
 -97 dBm @ 1 Mbps Rx Sensitivity (802.11b)

**RF Data Transmission**

**RF Encryption.** AES, TKIP, WEP, WPA, WPA2  
**RF Data Rate.** 6, 9, 12, 24, 36, 48 or 54 Mbps

**Operating Modes**

Base Station, Station Adaptor and Interbuilding Repeater

**Data Throughput**

1 Mbps to 20 Mbps  
 (depending upon range and link quality)

**Connections**

**Antenna.** Reverse polarity SMA connector, female, 50 Ω  
**Ethernet.** 10/100Base-T Auto-MDIX  
**Power.** 10-28 VDC, 3-pin pluggable terminal block

**Indicators—** Status LED's including

**Power Status**  
**LAN** (Link-Act)  
**LAN** (100)  
**WLAN**  
**RSSI\*** in SA mode (5 stages)

**Operating Environment**

**Humidity.** 0-90% non-condensing humidity  
**Working Temp.** -40 to 75°C (-40 to 167°F)

**Enclosure**

**Standard.** 18-gauge steel with mounting flanges  
**Dimensions.** 7.6 x 5.6 inches (19.3 x 14.3 cm);  
 9.4 x 5.6 inches (23.9 x 14.3 cm) with mounting flanges  
**Optional.** DIN rail mounting

**Shipping Weight.** appx 1.8 lb (0.82 kg)

\*Receiver Signal Strength Indicators

P/N 155-09855-004A 04/12

**Operating Frequency**

License-free, 902-925 MHz ISM band

**Included.**

**CD** User Manual  
**Antenna.** Test Antenna  
**Other.** Ethernet Cable, Power Supply, Quick Start Guide  
**Power Supply.** Wall mounted transformer.  
 120- 240 VAC. 50/60 Hz

**Transmitter**

**Distance.** 10 miles (16 km) LOS with Yagi antennas  
**RF Output Power.** 316 mW (25 dB)  
**Modulation.** CCK, OFDM  
**Spreading Code.** Direct Sequence  
**Channels:** 3  
**Occupied bandwidth.** 5 MHz, 10 MHz or 20 MHz

**Receiver Sensitivity**

-72 dBm @ 54 Mbps  
 -92 dBm @ 6 Mbps

**RF Data Transmission**

**RF Encryption.** AES, TKIP, WEP, WPA, WPA2  
**RF Data Rate.** 6, 9, 12, 24, 36, 48 or 54 Mbps

**Operating Modes**

Base Station, Station Adaptor, and Interbuilding with Repeating

**Data Throughput**

1 Mbps to 20 Mbps  
 (depending on range and link quality)

**Power**

10-28 VDC  
 max 250 mA @ 24 VDC  
 max 1100 mA @ 12 VDC

**Connections**

**Antenna.** SMA connector (female), 50 Ω  
**Ethernet.** 10/100Base-T Auto-MDIX  
**Power.** 10-28 VDC, 3-pin pluggable terminal block

**Indicators—** Status LED's including

**Power Status**  
**LAN** (Link-Act)  
**LAN** (100)  
**WLAN**  
**RSSI\*** in SA mode (5 stages)

**Operating Environment**

**Temperature.** -40 to 167°F (-40 to 75°C)  
**Humidity.** 0 to 95% non-condensing humidity

**Enclosure**

**Standard.** 18-gauge steel with mounting flanges  
**Dimensions.** 7.6 x 5.6 inches (19.3 x 14.3 cm);  
 9.4 x 5.6 inches (23.9 x 14.3 cm) with mounting flanges  
**Optional.** DIN rail mounting

**Shipping Weight.** approx 1.8 lb (0.82 kg)

\*Receiver Signal Strength Indicators

P/N 155-09862-003A rev 04/12